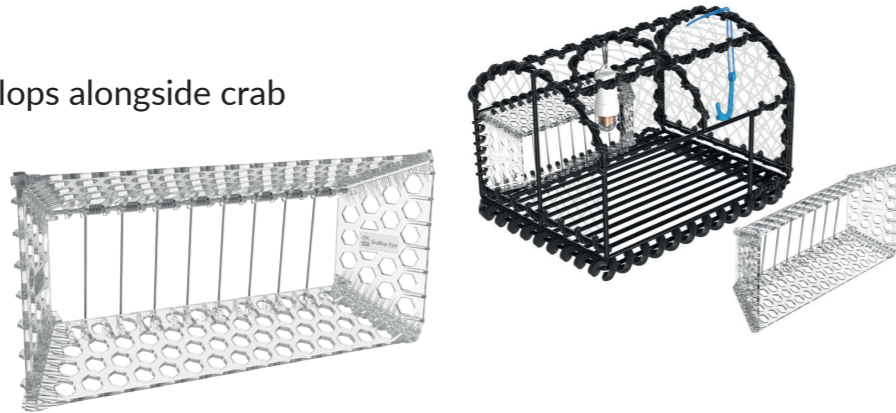


## ScallopEye

A pot entrance to catch scallops alongside crab and lobster.

For ScallopEye specifics, please review the product technical specifications sheet on our website.



## ScallopLight

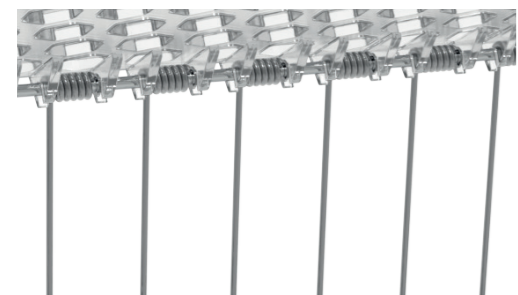
A light designed to attract scallops.

- Lens optimised to attract scallops.
- 1500-hour battery life (2 months).
- Auto immersion switch.
- Extremely durable polycarbonate.



## Maintenance

- Be aware of biofouling.
- Ensure prongs rotate freely.
- Powerwash or scrub as required.



## Battery Replacement

When replacing batteries, check O-ring integrity and reapply lube where/when necessary.



**Step 1**  
Unscrew cap in a clean and dry environment.

**Step 2**  
Replace battery ensuring polarity is correct.

**Step 3**  
Make sure thread and O-rings are free from dirt. Apply additional lube to O-rings if required. Screw base and cap firmly together ensuring O-rings become compressed.

A GUIDE TO

# Scallop Potting



Use this guide to maximise scallop catch



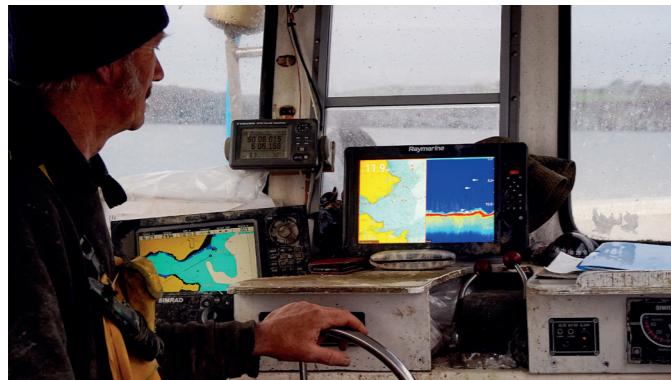
Fishtek Marine  
Unit 1a, Webbers Way, Dartington, Totnes, Devon, TQ9 6JY.  
United Kingdom  
www.fishtekmarine.com  
info@fishtekmarine.com

# A GUIDE TO Scallop Potting

The two approaches to scallop potting are:

- 1 Boosting crab catch with scallops
- 2 Scallop only

The method chosen depends on the fisher's preference and ground. Some fishers have found that using approach 1 (boosting crab catch with scallops) proved useful as a sampling method for their ground, and on finding productive areas, honed in utilising approach 2 (scallop only) which offers a more focused pot placement resulting in higher scallop catches.



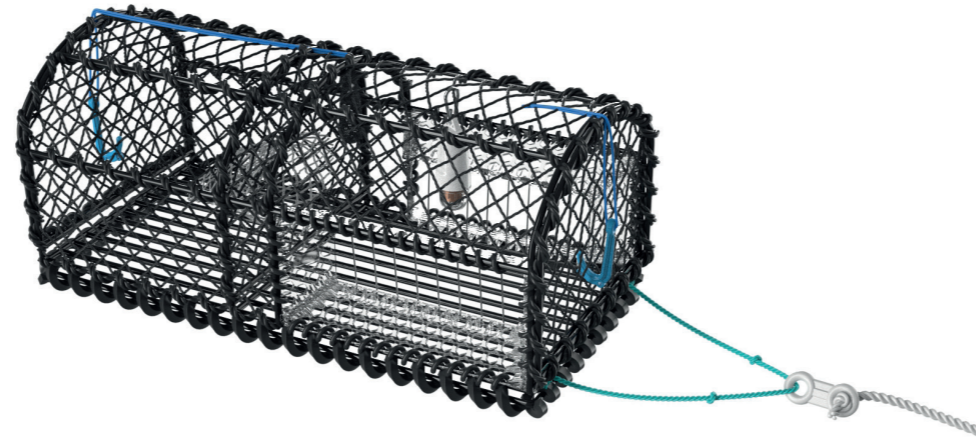
## APPROACH 1

### Boosting crab catch with scallops

**GEAR:** Parloured pot fitted out with x2 ScallopEyes and x1 ScallopLight.

**POT:** Baited.

**STRINGS:** Constructed and used as normal within a crustacean fishery application.



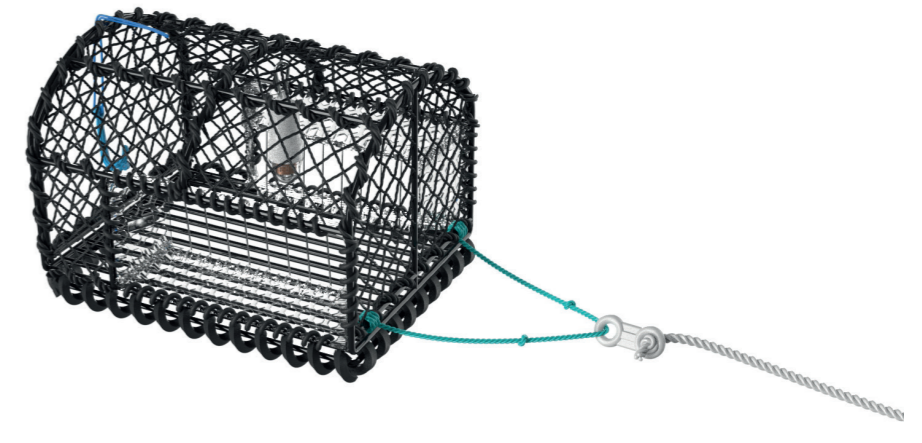
## APPROACH 2

### Scallop only

**GEAR:** Non-parloured pot fitted out with x2 ScallopEyes and x1 ScallopLight.

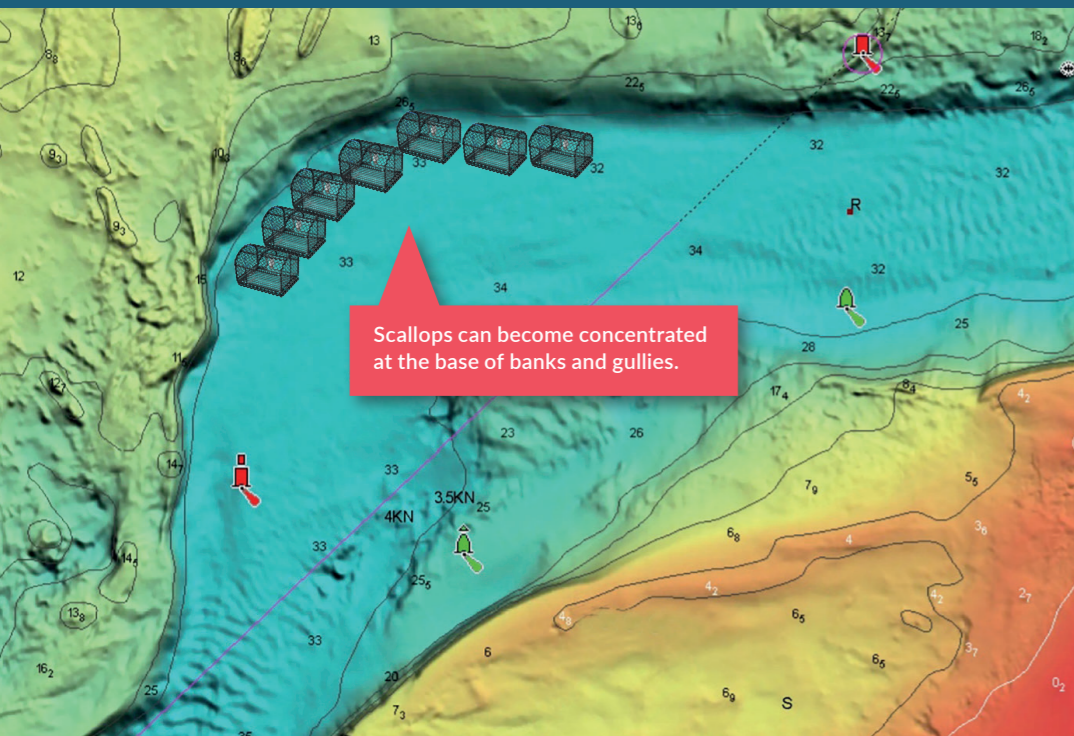
**POT:** Unbaited.

**STRINGS:** Made so that pots are closer together to enable a higher resolution fishing capability.

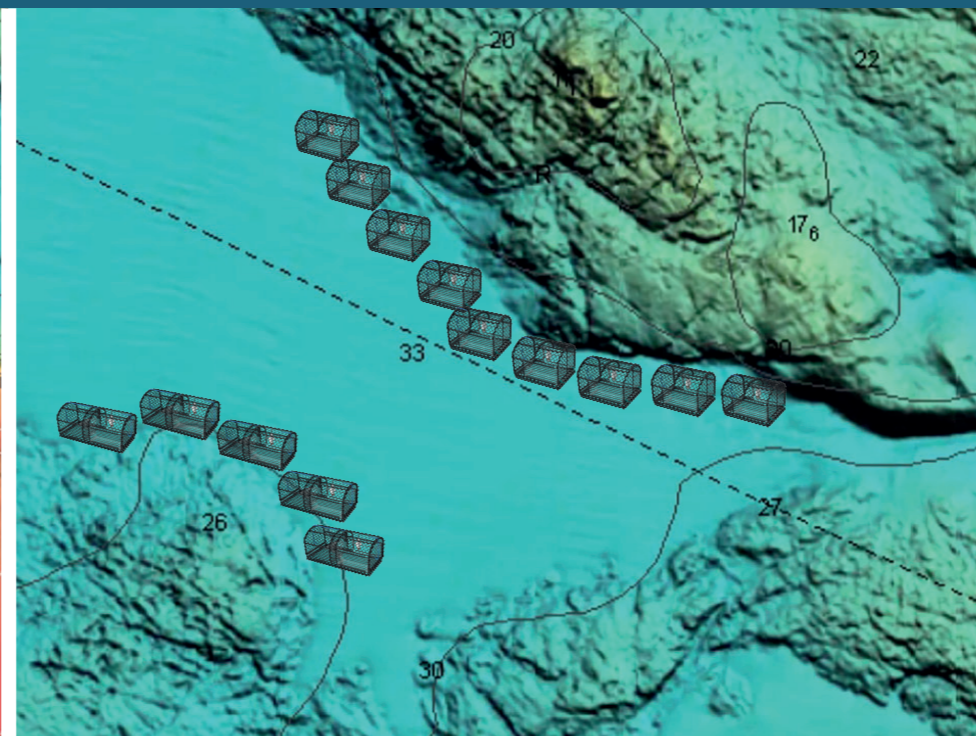


## Features to look for:

### CHANNELS & GULLIES



### SEDIMENT ON THE EDGE OF REEF STRUCTURES



### BASE OF PRODUCTIVE BANKS

